

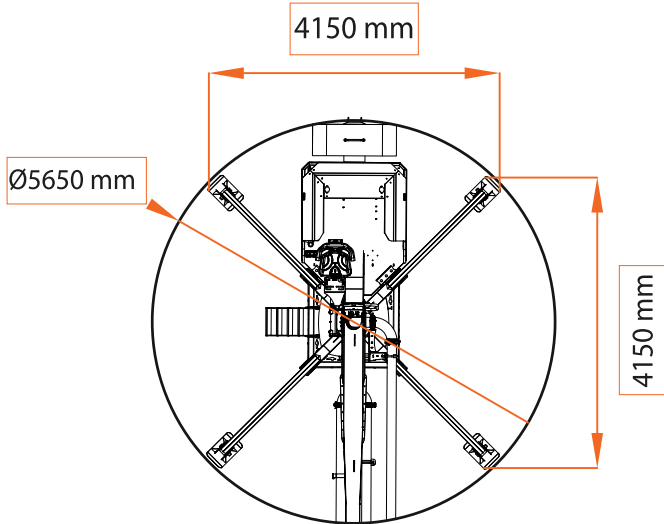


# Spider Placing Boom HD12 R2

**HIGH DYNAMIC**  
series

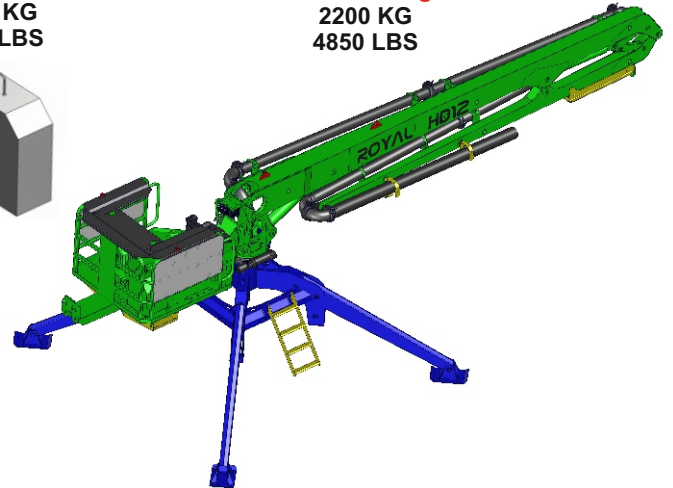
## Technical Details

Horizontal Reach	12 M
Vertical Reach	14 M
Working Range	600 M <sup>2</sup>
Machine Weight	2200 KG / 4850 LBS
Ballast Weight	1300 KG / 2870 LBS
Total Weight	3500 KG / 7720 LBS
End Hose	3 M
Power / Voltage	5,5 KW, 400-480 V, 3 PHASE



**Ballast Weight**  
1300 KG  
2870 LBS

**Machine Weight**  
2200 KG  
4850 LBS



## Standard Equipments



Radio Control



Proportional  
Radio Remote Control



Electric Motor

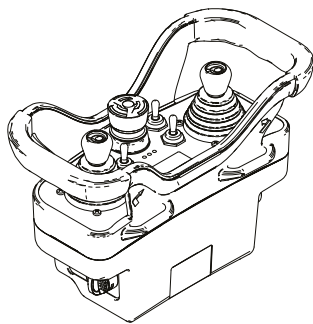
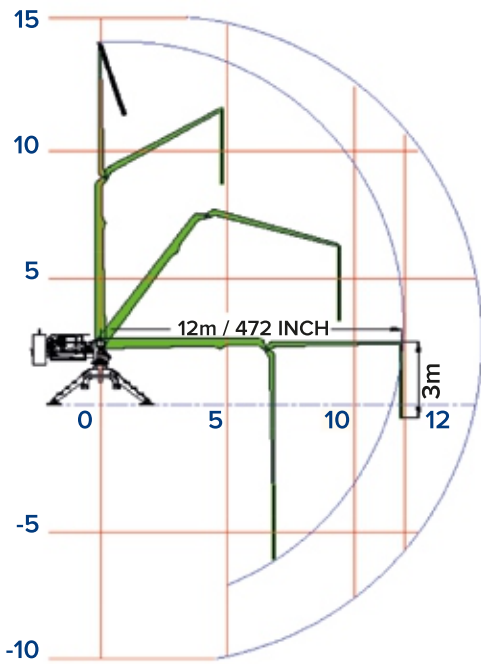


360°



Ballast Weight Steel  
Case

## Working Range



Proportional  
Radio Remote  
Control

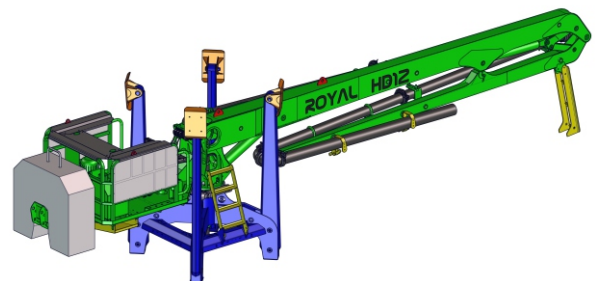
## General Descriptions

- HD12 R2 standart usage is on outrigger.
- Boom sections are made of High strength S700 MC steel and cut buy cnc laser.

**Ballast weight steel case mould will be given to be filled with concrete on construction site by your side.**

- All the pin connection bearings are horizontally milled.

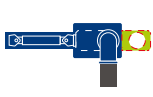
Hydraulic oil pump and connections are located outside the oil tank for ease of diagnose maintenance and service.



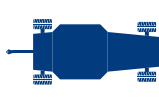
## Optional Equipments



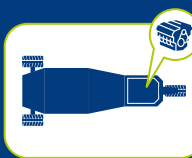
Diesel or Gasoline Engine



Shut-off Valve



Towable Transporter



T8 Self Propelled  
Transporter



Operator Seat



Wheels with Brake

## Proportional Split According to Crane Lifting Capacity

**Total Weight (including ballast weight)  
3500 kg.**



### Importance of Mechanical Design

- During the process of replacing the boom section, it will not touch the ground and it will be prevented from scratch and corrosion.
- At the process of displacement and installation in construction sites, the part of the machine must save its transport position by itself without any support or jackhorse etc.. by the unity of our design boom section and other groups do not need any support and will not overturned during displacement and installation



More safe and precise control with the proportional remote and hydraulic valve



Ease of Service and Maintenance



Hydraulic oil pump located outside of the tank for ease of diagnose



Boom Section Feets prevents from scratch and corrosion

### Origin Of Products Used

 CONCRETE DELIVERY LINE /TURKEY	 FLUID POWER DESIGN HYDRAULIC OIL PUMP /ITALY	 BOOM SHEETS /GERMANY	 HYDRAULIC CIRCUIT PIPES /AUSTRIA
 mobile valves VALVE BLOCK /TURKEY	 safety remote control RADIO REMOTE CONTROL /ITALY	 ELECTRICAL SYSTEM /FRANCE	 HYDRAULIC SYSTEM OIL /FRANCE
 HYDRAULIC SYSTEM FILTERS /GERMANY	 SLEWING GEAR /SPAIN	 ELECTRIC MOTOR /GERMANY	 SLEWING HYDRO MOTOR /ITALY